

Ngāti Raukawa, te au ki te tonga

Member induction manual

23 Haratua 2023



TABLE OF CONTENTS

Introduction	Page 3
Map of Raukawa ki te Tonga district showing 25 hapu locations	5
Simple table outlining the differing roles of the Runanga members, Whaiti members and the Pae Tahuu members	6
Representation/Appointment & Accountability Structure	8
List of 25 hapu members, with a key to table for easy reference	9
Whakapapa table of 25 hapu members showing how each of the 25 hapu is connected by genealogy; all being descendants of Tawhao through his two sons Whatihua and Tūrongo. Introduction then attachment follows	10



INTRODUCTION for members of Te Rūnanga o Raukawa Incorporated Society

Prior to 1989 a number of local hapu of Ngati Raukawa ki te Tonga and Iwi Including Rangitane and Muaupoko came together to establish the Raukawa District Maori Council as the local chapter of the NZ Maori Council. However, in the late 1980s and the passing of the 1989 Runanga Iwi Act, Whatarangi Winiata embarked on a mission to establish a Runanga. His initial view was that the Runanga would comprise representatives from the Raukawa District Maori Council, the Otaki Maori Racing Club, and Rangiatea.

That arrangement would have made it possible for the Runanga to reflect community as well as multiple iwi. But that composition was later discarded for a Runanga that focused on the hapu of Ngati Raukawa, as well as other Iwi including Ngati Kauwhata, Ngati Wehiwehi, Ngati Tukorehe, and Ngati Toa.

The Runanga Iwi Act had presented a new framework for devolution. For the first time this legislation recognised that legally incorporated Runanga could become the administrative wings of respective tribes throughout Aotearoa. Thus Te Rūnanga o Raukawa Incorporated Society was formed.

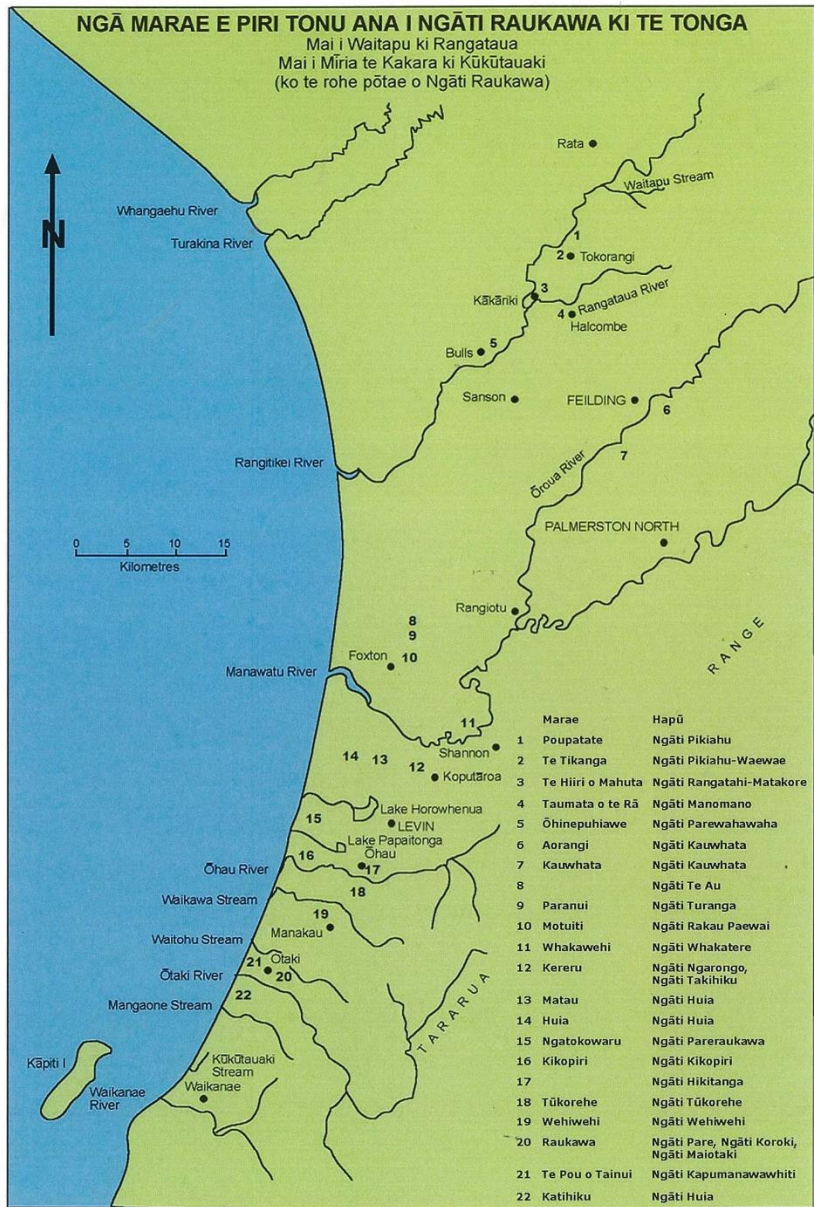
The founding members of the Rūnanga were Te Maharani Jacob (secretary), Mason Durie (chairman), Kawa Kereama, Ngawini Kuiti, Ani Parata, Whata Winiata, Frances Winiata, Turoa Royal, Whatakaraka Davis, Yvonne Wehipeihana Wilson, Margaret Davis, Maui Pomare, Hohipua Cook, Rupene Waka, Peter Richardson and Te Iwa Clifton.

At that time a minimum of 15 people were required to establish an Incorporated Society. Although charitable in nature, there was provision also for commercial activities which could be taxed at a lesser and more attractive Maori Authority tax rate. Originally 23 of the current 25 Iwi and hapu were enlisted as hapu nominators, with a further two being added with Ngāti Tukorehe in 1993 and Ngāti Hikitunga in 2010. Ngāti Toa chose not to become a member.

The constitution of Te Rūnanga o Raukawa Incorporated still has the same first objective:

Being to conserve, promote, advance and assist whanau, hapu and iwi of Tainui Iwi who are tangata whenua in the rohe, popularly known as 'Mai i Waitapu ki Rangataua, Mai i Miria te Kākara ki Kukutauaki.'





This map shows the location of the 25 hapū and some 20 marae located between the Waitapu stream in the north and Kūkūtauaki stream in the south.

Below is a simple table outlining critical differing rules from the constitution/regulations with regards to the roles of the Runanga membership, Whaiti membership and Pae Tahuhu membership.

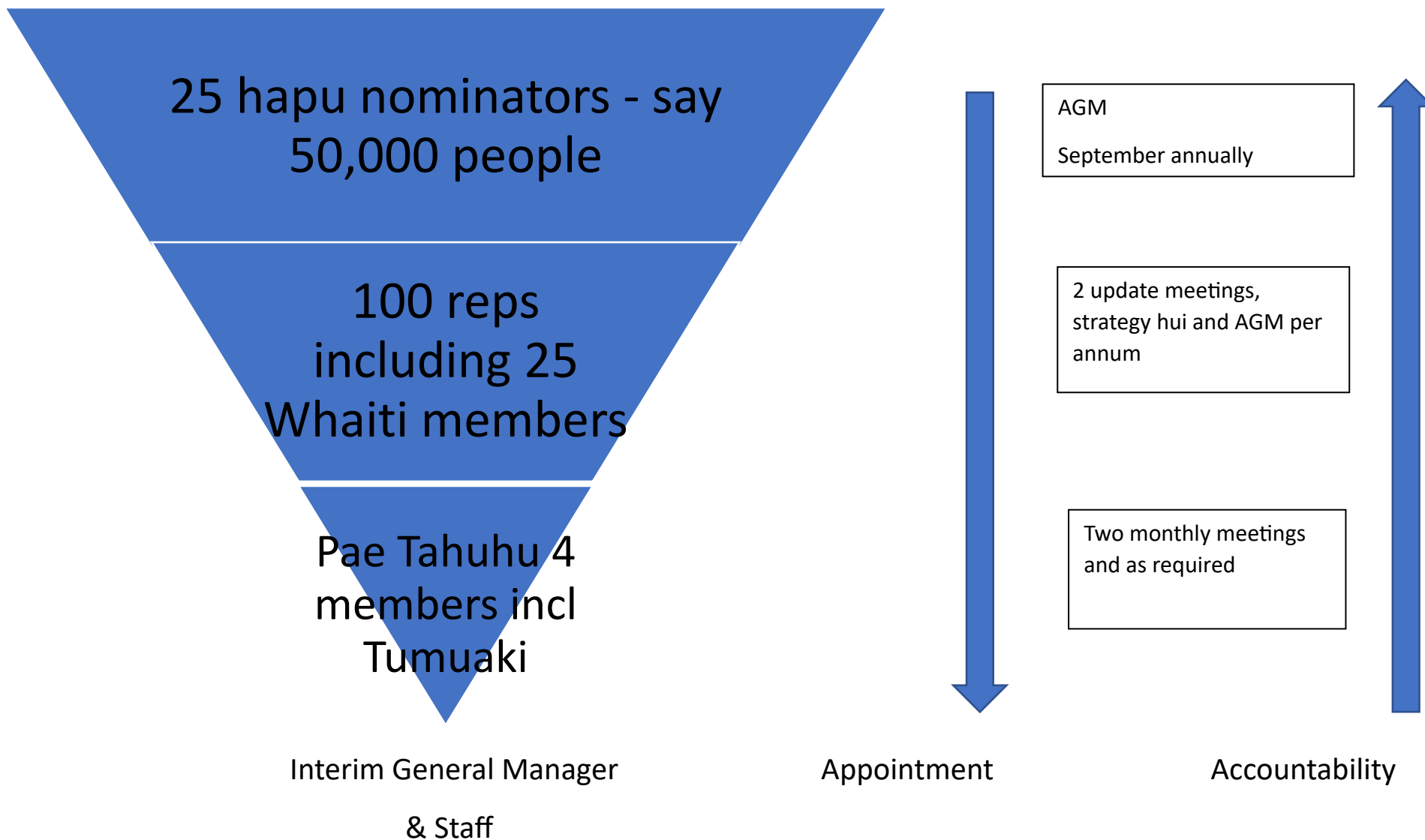
There are really four key parties involved as follows: Hapu nominators; Rūnanga members; Whaiti members and Pae Tahūhu members. The following table is a simplification of the various rules for these key parties. Note that special meetings have extra requirements and are not described in detail here.

	Hapu nominator	Runanga	Whaiti	Pae Tahuhu
Number of members	25	4 each hapu=100	1 each hapu plus Tumuaki ex-officio =26	4
At each Annual General Meeting the Hapu nominator via their authorised signatories such as a Chair or Secretary, are given 60 days notice to advise any changes to their Runanga and Whaiti appointed members				
Quorum for a meeting		25 (sec20)	12 (sec22.2)	3 (PT sec6.3)
With regards to the Tumuaki in Whaiti meeting, he/she has own vote plus casting vote			(sec19.1)	
Pae Tahūhu members are required to step down annually on a staggered basis, but available for re-election				(PT sec5.1)
Whaiti members after three years continuous membership, need to be reappointed by their hapu			(AGM sec6.3a)	
Whaiti members must step down after six years continuous membership. They can still remain as a non-Whaiti member for their hapu. They could be reappointed to the Whaiti in the succeeding year after having stepped down			(AGM sec6.3b)	

	Hapu nominator	Runanga	Whaiti	Pae Tahuhu
The Pae Tahūhu role is an executive committee role. Annually they are required to report at least four times to the Whaiti. They are required to conform with a strategic plan that is provided in a cultural matrix form.				(PT sec1) (sec8.1 a & c)
The Pae Tahūhu are required to be an example of good governance in action, and thus they should provide an annual plan to the Whaiti and act in accordance with good governance policies.				(PT sec7.2 a)
An AGM for the Runanga should be held within 90 days of each 30 June year end, where various reports including audited accounts are provided.		(sec14)		



He kākano i ruia mai i Rangiatea



REPRESENTATION/APPOINTMENT & ACCOUNTABILITY STRUCTURE

Full list of names of the 25 hapu nominators

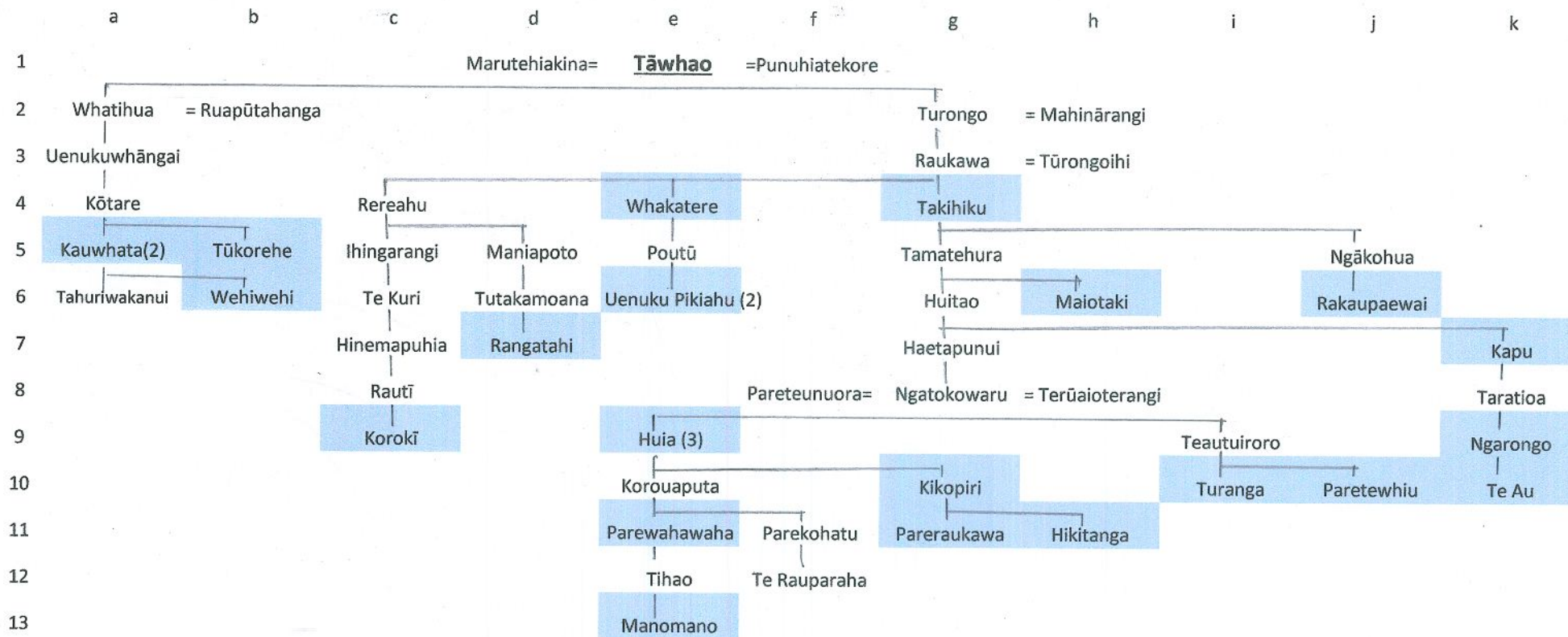
KEY		Full name
h11	Ngati Hikitanga	
e9	Ngati Huia ki Katihiku	
e9	Ngati Huia ki Matau	
e9	Ngati Huia ki Poroutāwhao	
K7	Ngati Kapu	Ngati Kapuamanawawhiti
a5	Ngati Kauwhata ki Aorangi	
a5	Ngati Kauwhata	
g10	Ngati Kikopiri	
C9	Ngati Koroki	
h6	Ngati Maiotaki	
e13	Ngati Manomano	
k9	Ngati Ngarongo	
j10	Ngati Pare	Ngati Paretewhiu
g11	Ngati Pareraukawa	
e11	Ngati Parewahawaha	
e6	Ngati Pikiahuwaewae ki Poupatate	
j6	Ngati Pikiahuwaewae ki Tokorangi	
j6	Ngati Rakau	Ngati Rakaupaewai
d7	Ngati Rangatahi	&Matakore
g4	Ngati Takihiku	
k10	Ngati Te Au	
b5	Ngati Tūkorehe	
i10	Ngati Turanga	
b6	Ngati Wehiwehi	
e4	Ngati Whakatere	

Please note that this whakapapa is indicative only of how the many karangatanga within Raukawa ki te tonga hapu are connected.

It should not be viewed as the definitive and only whakapapa. It is the beginning only of an understanding of our connections.

You will find a more comprehensive set of whakapapa tables showing more of the many Ngāti Raukawa te au ki te tonga connections by a google search of the 'WAI2200 #H6(a) Raukawa connections', presented by Jerald Twomey of Ngāti Manomano. He provides eight tables of very useful whakapapa.

INSERT WHAKAPAPA TABLE



Whakapapa table that shows the inter-relationship of 25 hapu nominators of Te Rūnanga o Raukawa Inc.

Please note that this whakapapa is indicative only of how the many karangatanga within Raukawa ki te tonga hapu are connected. It should not be viewed as the definitive and only whakapapa. It is the beginning only of an understanding of our connections. Further understanding can be found in many publicly available documents e.g. Google search

He iti na motai' or WAI2200. Note that three tipuna names are included with multiple marae locations, being:

Kauwhata ki Aorangi & Kauwhata

Pikiahuwaewae ki Poupatatē & Pikiahuwaewae ki Tokorangi

Huia ki Katihiku & Huia ki Matau & Huia ki Poroutāwhao